

Features

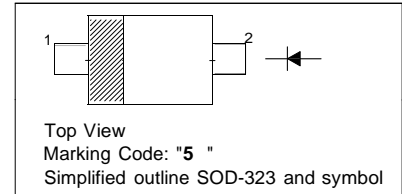
- Small surface mounting type
- Low reverse current and low forward voltage
- High reliability

Applications

- High speed switching

PINNING

PIN	DESCRIPTION
1	Cathode
2	Anode



Absolute Maximum Ratings (T_a = 25 °C)

Parameter	Symbol	Value	Unit
Peak Reverse Voltage	V _{RM}	40	V
Reverse Voltage	V _R	30	V
Mean Rectifying Current	I _O	30	mA
Peak Forward Surge Current (60 Hz for 1 Cyc.)	I _{FSM}	200	mA
Junction Temperature	T _j	125	°C
Storage Temperature Range	T _{stg}	- 40 to + 125	°C

Characteristics at T_a = 25 °C

Parameter	Symbol	Typ.	Max.	Unit
Forward Voltage at I _F = 1 mA	V _F	-	0.37	V
Reverse Current at V _R = 30 V	I _R	-	0.5	μA
Capacitance Between Terminals at V _R = 1 V, f = 1 MHz	C _T	2	-	pF

Note: ESD sensitive product handling required.

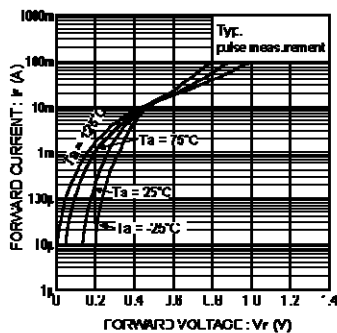


Fig. 1 Forward characteristics

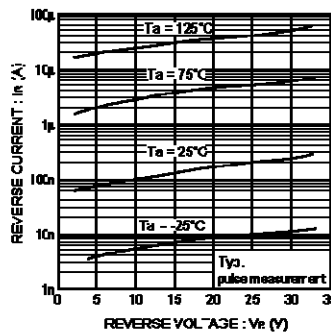


Fig. 2 Reverse characteristics

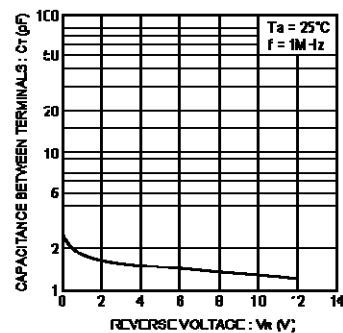
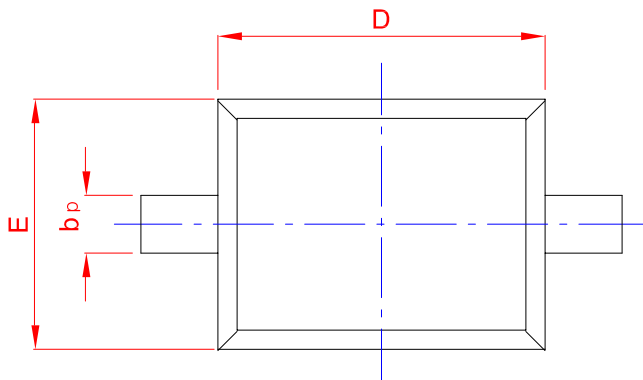
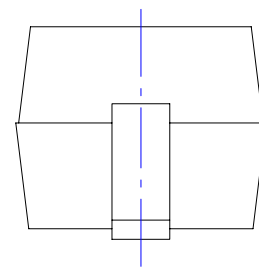
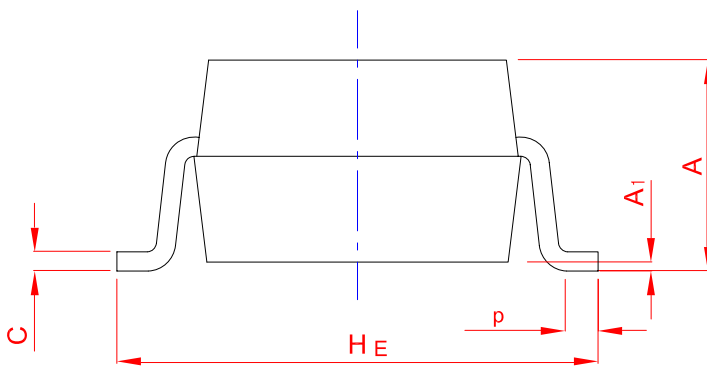
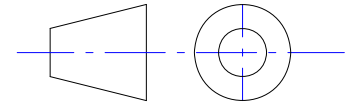


Fig. 3 Capacitance between terminals characteristics

PACKAGE OUTLINE

Plastic surface mounted package; 2 leads

SOD-323



UNIT	A	b _p	C	D	E	H _E	A ₁	L _p
mm	1.20	0.40	0.15	1.80	1.35	2.80	0.10	0.50
	0.90	0.25	0.10	1.60	1.15	2.30	0.01	0.20

IMPORTANT NOTICE

and **SXSEMI**[®] are registered trademarks of **SXSEMI Electronics Co., Ltd** (SXSEMI). SXSEMI reserves the right to make changes without further notice to any products herein. SXSEMI makes no warranty, representation or guarantee regarding the suitability of its products for any particular purpose, nor does SXSEMI assume any liability arising out of the application or use of any product or circuit, and specifically disclaims any and all liability, including without limitation special, consequential or incidental damages. "Typical" parameters which may be provided in SXSEMI data sheets and/or specifications can and do vary in different applications and actual performance may vary over time. All operating parameters, including "Typicals" must be validated for each customer application by customer's technical experts. SXSEMI does not convey any license under its patent rights nor the rights of others. The products listed in this document are designed to be used with ordinary electronic equipment or devices. Should you intend to use these products with equipment or devices which require an extremely high level of reliability and the malfunction of which would directly endanger human life (such as medical instruments, aerospace machinery, nuclear-reactor controllers, fuel controllers and other safety devices), please be sure to consult with our sales representative in advance.