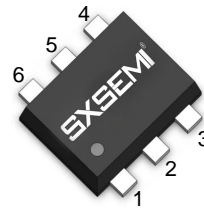
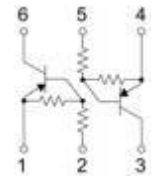


FEATURES

- I Two DTA114Y chips in a package
- I Mounting possible with SOT-563 automatic mounting machines
- I Transistor elements are independent, eliminating interference
- I Mounting cost and area be cut in half

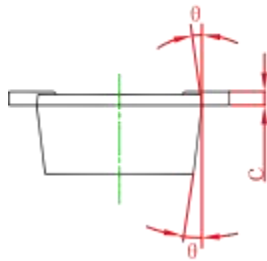
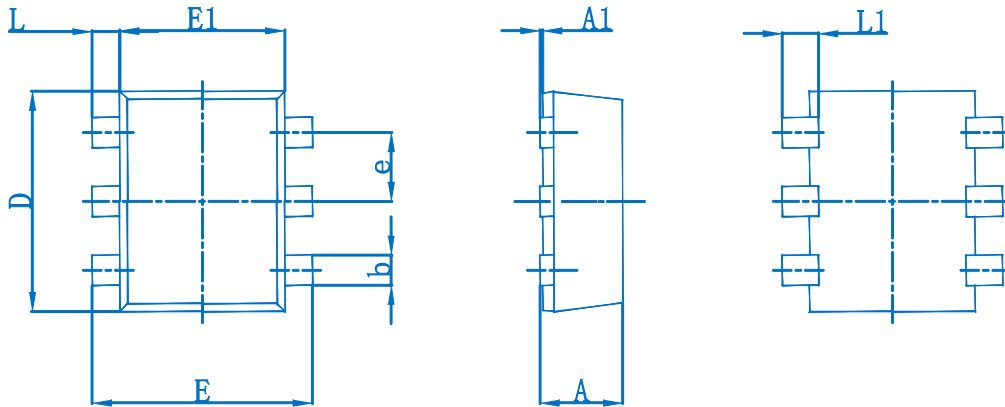
SOT-563

Marking: B9

Absolute maximum ratings (T_a=25°C)

Symbol	Parameter	Value	Units
V _{CC}	Supply Voltage	-50	V
I _{C(MAX)}	Output Current	-100	mA
V _i	Input Voltage	-40 to +6	V
P _D	Power Dissipation	150	mW
T _J , T _{stg}	Operation Junction and Storage Temperature Range	-55~+150	°C

Electrical Characteristics (T_a=25°C)

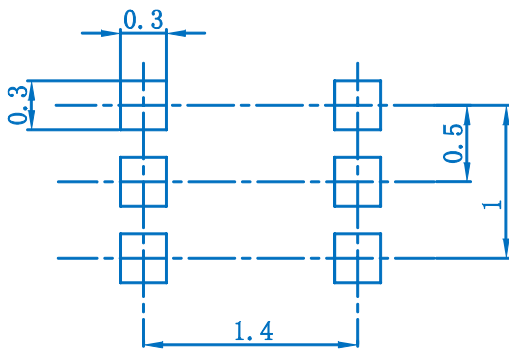
Parameter	Symbol	Test conditions	Min	Typ	Max	Unit
Input turn-on voltage	V _{i(on)}	V _O =-0.3V, I _O =-1mA			-1.4	V
Input cut-off voltage	V _{i(off)}	V _{CC} =-5V, I _O =-100μA	-0.3			V
Output voltage	V _{O(on)}	I _O =-5mA, I _i =-0.25 mA			-0.3	V
Input cut-off current	I _i	V _i =-5V			-0.88	mA
Output cut-off current	I _{O(off)}	V _{CC} =-50V, V _i =0			-0.5	μA
DC current gain	G _i	V _O =-5V, I _O =-5mA	68			
Transition frequency	f _T	V _O =-10V, I _O =5mA, f =100MHz		250		MHz
Input resistance	R _i		7		13	KΩ
Resistance ratio	R ₂ /R ₁		3.7		5.7	

SOT-563 Package Outline Dimensions



Symbol	Dimensions in Millimeters		Dimensions in Inches	
	Min.	Max.	Min.	Max.
A	0.525	0.600	0.021	0.024
A1	0.000	0.050	0.000	0.002
e	0.450	0.550	0.018	0.022
c	0.090	0.160	0.004	0.006
D	1.500	1.700	0.059	0.067
b	0.170	0.270	0.007	0.011
E1	1.100	1.300	0.043	0.051
E	1.500	1.700	0.059	0.067
L	0.100	0.300	0.004	0.012
L1	0.200	0.400	0.008	0.016
θ	10°REF.		10°REF.	

SOT-563 Suggested Pad Layout



- Note:
1. Controlling dimension: in millimeters.
 2. General tolerance: ±0.05mm.
 3. The pad layout is for reference purposes only.